

Your experienced partner
in veterinary cataract surgery

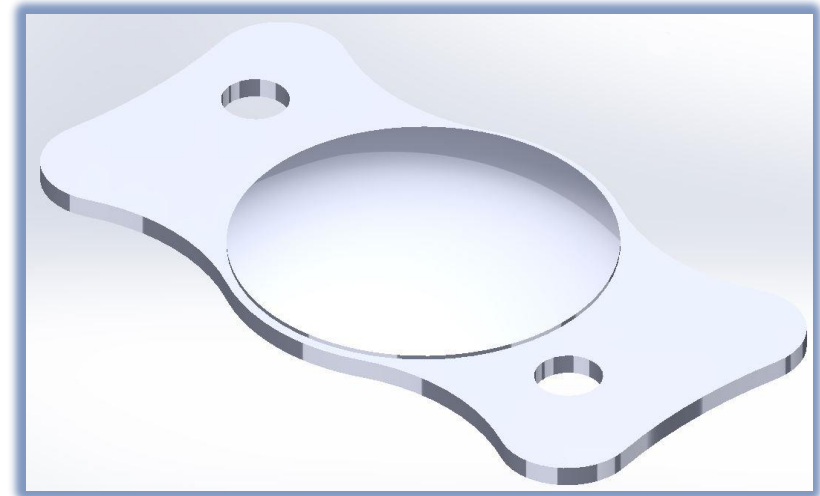
an-vision

an-SD7 IOL

Loading Instructions



See all our products at
www.an-vision.com



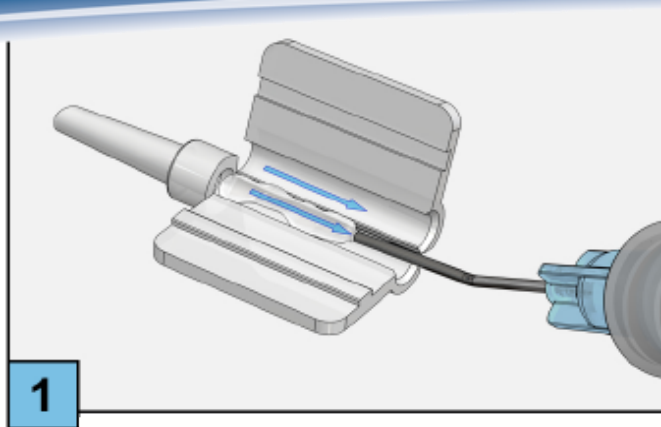
Specifically Designed for Canines

- Quick Loading
- Easy Implantation
- Immediate Centering within Capsular Bag
- Integrated 360° Posterior Barrier

an-vision GmbH
Hennigsdorf, Germany
+49 (0)3302-209 5550
info@an-vision.eu

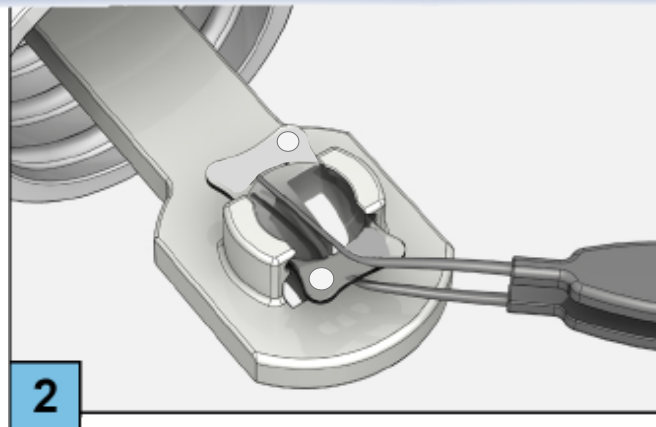
an-vision

an-vision Inc.
Salt Lake City, UT, USA
801-561-5040
info@an-vision.com



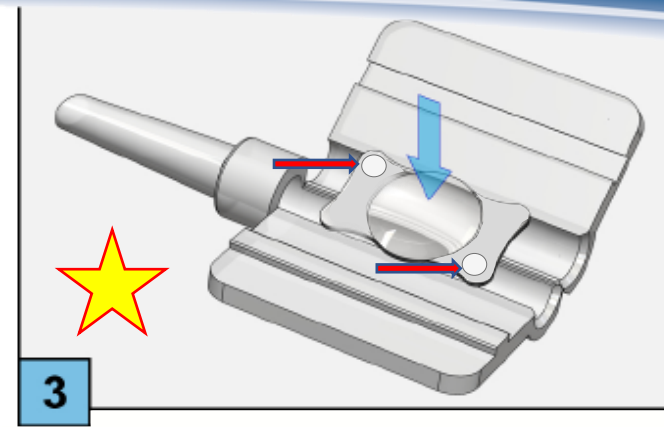
1

Apply two lines of viscoelastic, preferably an-bfh 1.8% or 2.2% along the channel of the cartridge. Do not touch the tip of the cartridge.



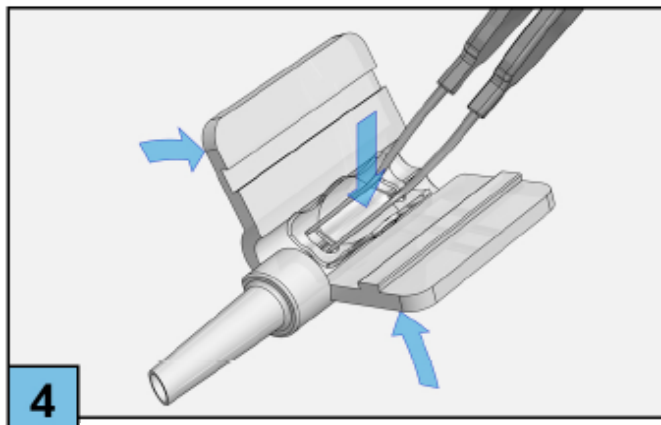
2

Gently remove the lens from the lens holder using forceps with fine rounded tips. Do not let the lens dry up. Do not use the fluid from the bottle for ocular irrigation.



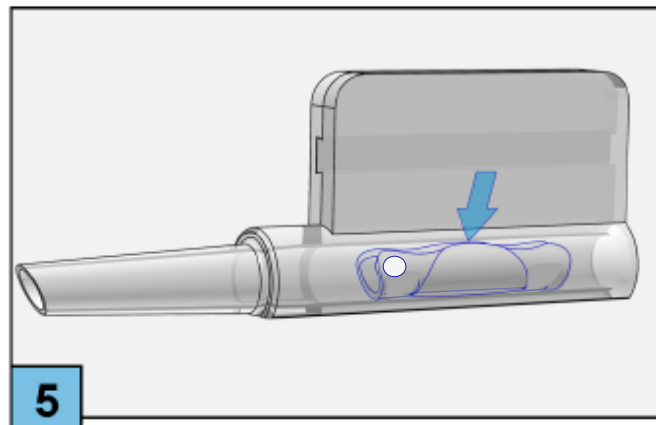
3

Place the lens in the center of the open cartridge. **Note the alignment of the marked haptics** as shown in the image above.



4

Hold optic down and center the IOL on the loading deck of the cartridge. Close the cartridge, ensuring not to clamp the lens within the wings.



5

Check the position of the lens within the channel of the closed cartridge. Haptic must not reach up into the closed wings. Inject additional viscoelastic into the rear of the cartridge as well as into the tip.



6

Injector with loaded cartridge ready for implantation.