

# an-vision

Brand New!

## an-PLD Preloaded IOL

Brand New!

The first preloaded canine IOL designed with a modified plate haptic for a safe fit in the lens capsule

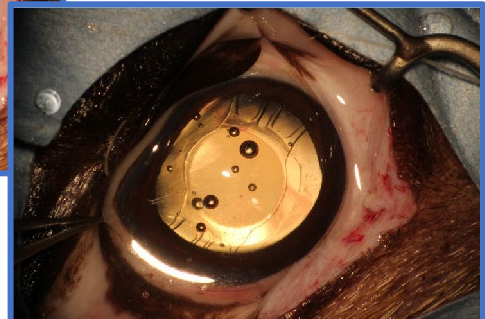
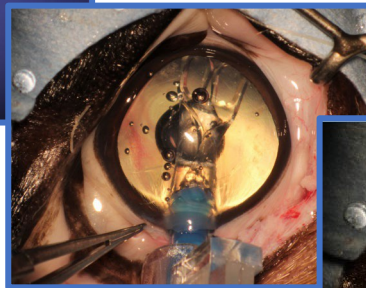
The **an-PLD** has been developed to improve your surgery workflow and to ensure a smooth and controlled IOL implantation.

### Features:

- *Optimized preloaded system*
- *No manipulation of the IOL*
- *Soft unfolding*
- *IOL inspection possible before injection*
- *Ready for injection*

### Technical Information:

- *6mm Optic*
- *Total 13mm*
- *D +41*
- *Hydrophobic Acrylate*



**an-vision Inc.**  
T: 801-561-5040  
[info@an-vision.com](mailto:info@an-vision.com)

**an-vision GmbH**  
T: +49 (0)3302-209 5550  
[info@an-vision.eu](mailto:info@an-vision.eu)

[www.an-vision.com](http://www.an-vision.com)